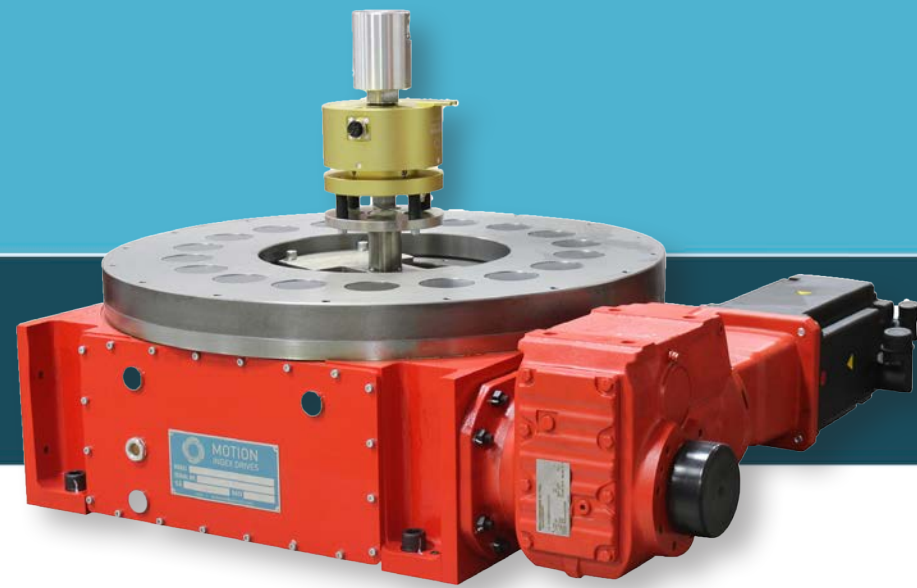


Motion's engineering staff is ready to tailor indexers; from our Rotary Tables to our Indexing Conveyors, to meet your specific application requirements through complimentary components. There is no limit to the variety of options available for your application. We are capable of supplying all the necessities to accompany your indexing device to ensure everything fits and runs properly. In order to build the best product possible, you need indexers tailored specifically for your application.



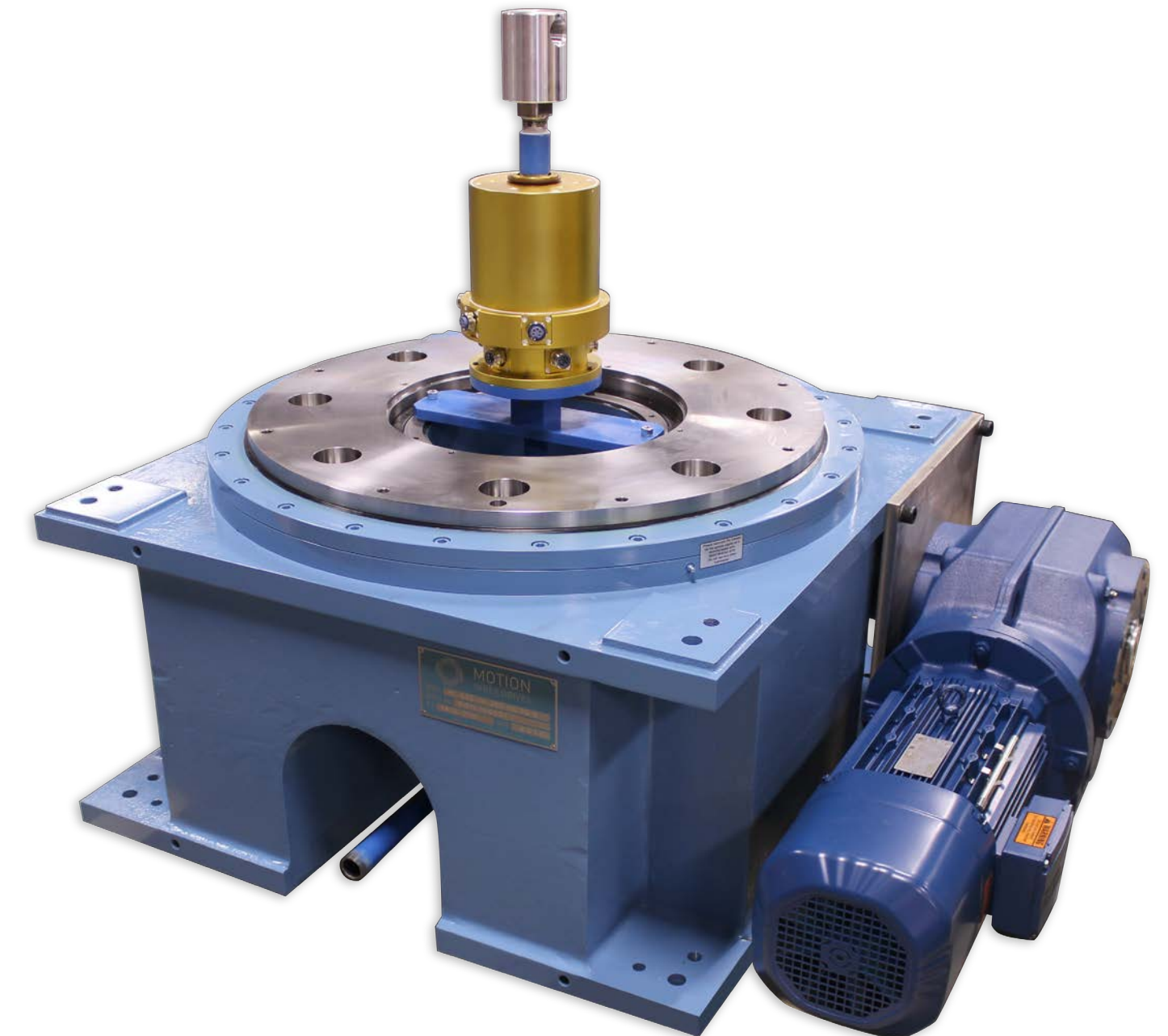
MOTION

INDEX DRIVES



Custom Fabrications

- Slip Rings
- Robot Pedestal
- Rotating Frames
- Dial Plates
- Machine Bases

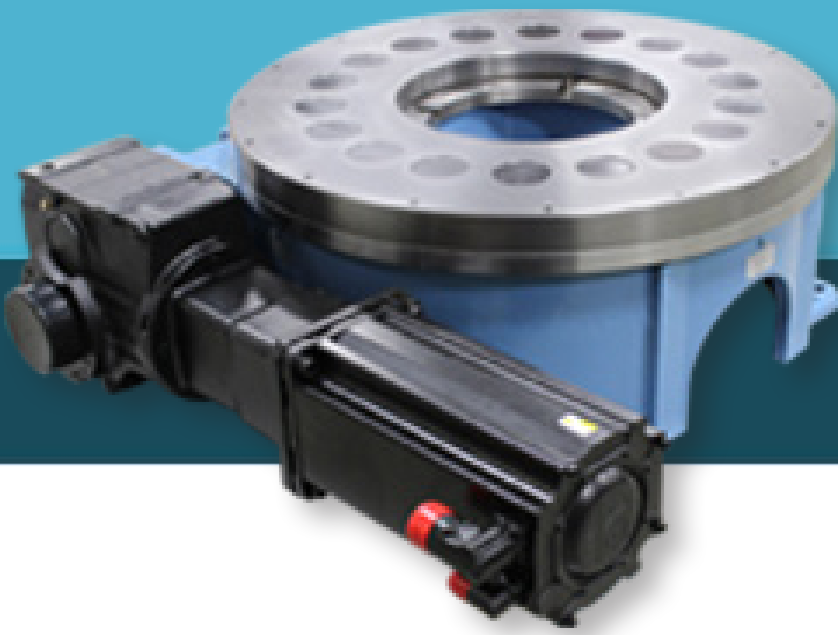


MOTION

INDEX DRIVES



info@mid.us.com
p. 248.743.9999 • f. 248.743.0749
1204 E. Maple • Troy, MI 48083
www.mid.us.com



Motion Index Drives rotary index tables utilize custom engineered cam followers and barrel cams to increase system accuracy and component lifespan when compared to processes used by leading competitors. Our rotary indexing tables have a vast range of options, including fully programmable units (servo motor and encoder tables) and fixed mechanical systems up to 106 fixed stations with custom movement profiles. All tables can be manufactured for specific industries, such as the food industry that requires chemical wash downs that can require stainless steel components.

Rotary Index Tables

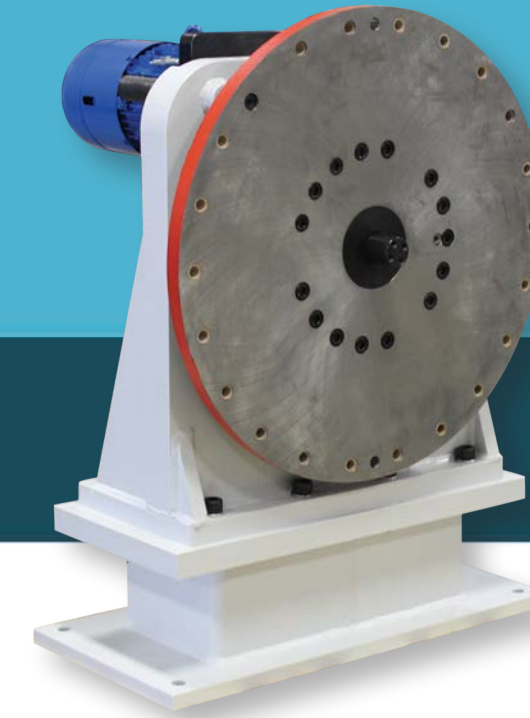
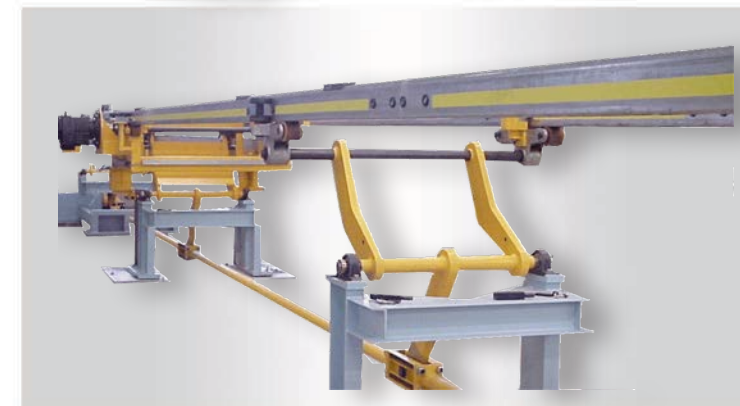
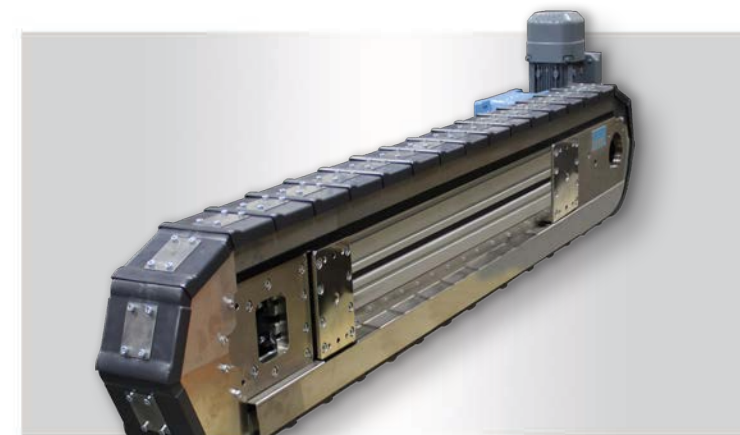
- Servo Rotary Tables
- Programmable AC Motor Rotary Index Tables
- Lift & Rotate Systems
- Fixed Barrel / Cam Indexers



Motion Index Drives offers a wide range of indexed Linear Transfer Systems for all your automated processing needs. Motion Index Drives and its global partners have created custom made-to-order Transfer Systems. Our vast range of Transfer Mechanisms have been utilized to manufacture an array of items, including everyday consumer products and packaging devices to heavy-duty earth moving equipment and Air Force fighter jet components.

Linear Transfer Systems

- Tool Tray Transfers
- Robot Transfer Units
- Precision Link Indexing
- Walking Beams
- Lift & Transfer Systems



Motion Index Drives' Weld Positioners utilize the TR series headstock / tailstock trunnion sets, on a high precision (less than 1 arc minute) planetary gear system. It is mounted in a vertical position complete with mounting plates and is ideal for moving large masses with smaller units, minimizing your equipment's footprint on the floor. Weld Positioners can be ordered with tailstock supports and one-piece base weldments.

Weld Positioners

- Single Axis Weld Positioners
- 3 Axis Weld Positioners
- 4 & 5 Axis Weld Positioners
- Adjustable Head Stock Weld Positioners

